

MYSTERY IN STONE



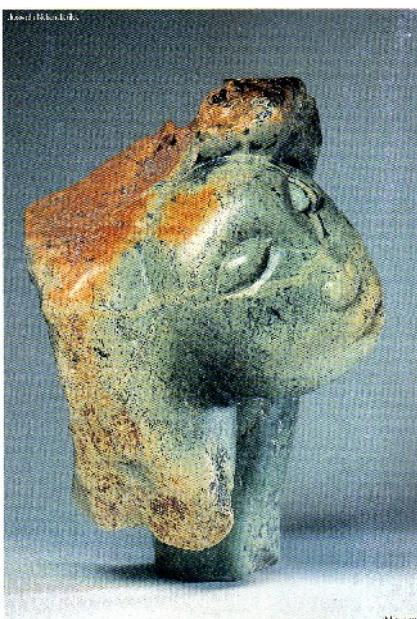
Lower Goulds Farm 19 - 20 June 2010

Zimbabwean Stone Sculpture Workshop with Tawanda Sarireni

Please come and join us for two wonderful days of stone carving. You will be taught each step needed to produce your own piece of art - starting with choosing your stone, then carving it with the appropriate tools and finally polishing it. Whether you have participated in a workshop before or not, are an experienced artist or are yet to be revealed as one, by the end of the weekend you will have your own polished sculpture to take home.

The stone has been shipped all the way from Zimbabwe and comes in many colours, ranging from blue, to green, to yellow to black, and it is quite soft and easy to carve. Children welcome from the age of 8. The oldest participant so far was 82.

Venue: Lower Goulds Farm,
Goulds Road, Alphamstone, Bures, Suffolk CO8 5HW - 01787 269 037



Timetable:

10 am to 5 pm on Saturday, 10 am to 4 pm on Sunday.

Saturday morning will start with an introductory talk. The tutors will be there to inspire you and help you throughout both days, but even if you can only manage part of the weekend, do come along. You can still make a beautiful sculpture.

Meals:

Please bring your own picnic lunch or a dish to share. Refreshments will be provided.

*On Saturday night we will have a big almost-midsummer-night bonfire.
Bring your musical instruments ...*

Cost: £ 75 for the weekend.

Concessions for students, children and families available on request.
Tools and protective goggles are provided but you are welcome to bring your own.

The stone will be charged at £ 2.50 per kg.



Accommodation if you would like to stay the night:

There are a few rooms available at Lower Goulds Farm - book early.
If you wish, you can also bring a tent and camp in the garden, or roll out your sleeping bag on a mattress in the attic.

Alternatively, you can stay in a local B&B. Please ask for details.

Enrolment:

Please send £ 20 deposit with your full postal and email address and tel to Therese Melville.

To get there from Colchester and Sudbury by car:

Drive to Lamarsh. At the telephone box, take road up to Alhamstone.

Take left-hand fork at village green. This is Goulds Rd. Drive for half a mile till you reach Lower Goulds Farm.

To get there from London by car: travelling time between 1h30 and 2 hours.

- M11 to Stansted
- A120 direction Colchester
- A131 direction Sudbury (not Chelmsford)
- about 2 miles after Halstead, turn right towards Pebmarsh.
- Drive through Pebmarsh. After 1/2m, when lane turns sharp right to Bures, continue straight ahead towards Alhamstone.
- At red letter box, turn right into Goulds Rd, then right again down the track to Lower Goulds Farm.

To get there from London by train: travelling time 1h10 min on the train.

The trains with suitable connection to Bures leave Liverpool St Station 13 min

before the hour. Change at Marks Tey. Please check trains are running before leaving.

We will be happy to collect you from Bures Station.

Note: To avoid breathing stone dust, work is done either outdoors or, if wet or too hot, in an open barn. Please dress accordingly.

If you stay for the bonfire, you might like to bring a rug.



For further information, to enrol and to request more invitations to send to your friends and acquaintances, please contact:

Therese Melville

Lower Goulds Farm
Goulds Rd, Alhamstone, Bures,
Suffolk, CO8 5HW
01787 269037 or 020 76071540
theresemelville@gmail.com

Tawanda Sarireni

www.mysteryinstone.com
tsarireni@yahoo.com

